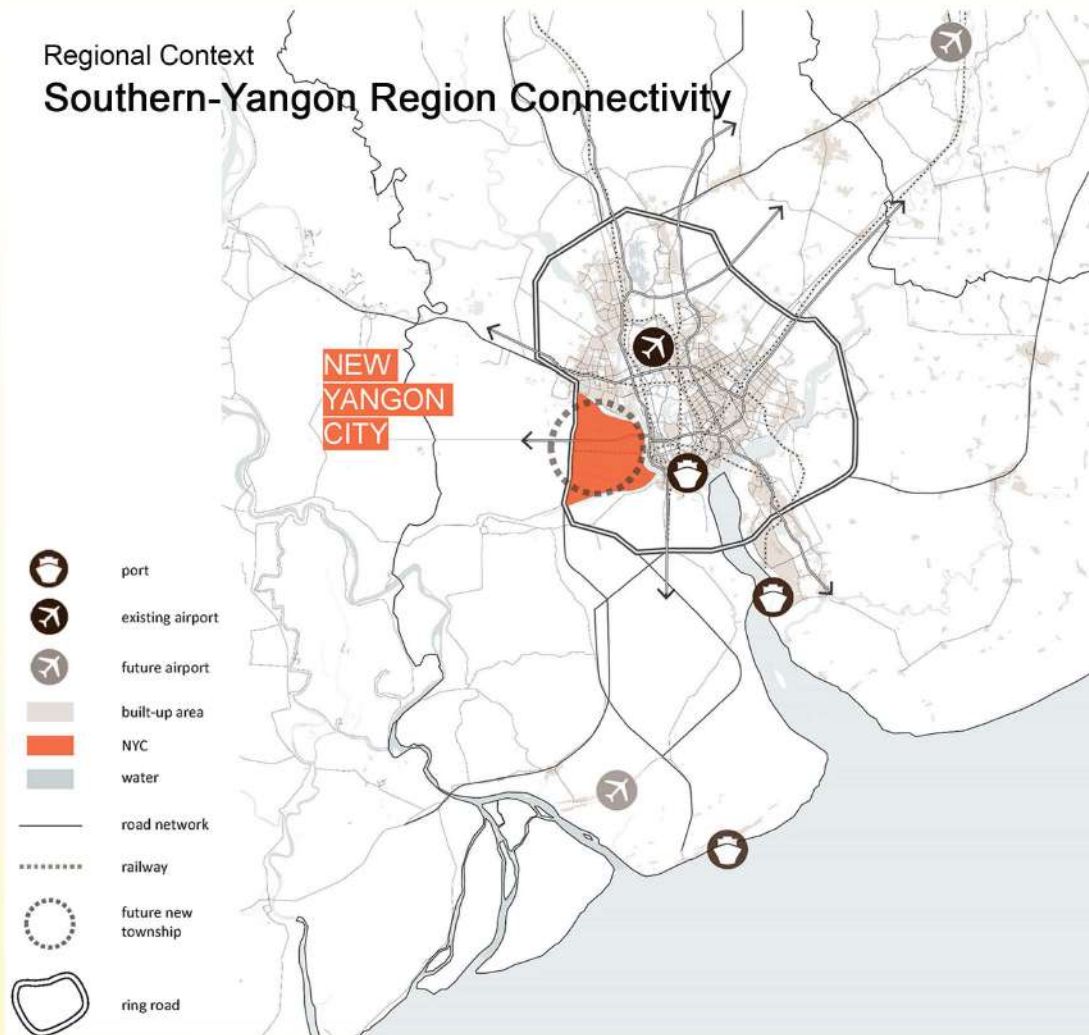




NEW YANGON CITY

Productivity City, Liveable City

Regional Context Southern-Yangon Region Connectivity



Population

About **1.2 million** people will live in New Yangon City by **2050**

Gradual increase with about **180,000** residents by **2025** and **290,000** by **2030**

Aspirational target of **750,000** people by **2025** will require large construction and planning efforts, including the construction of about **163,000** homes



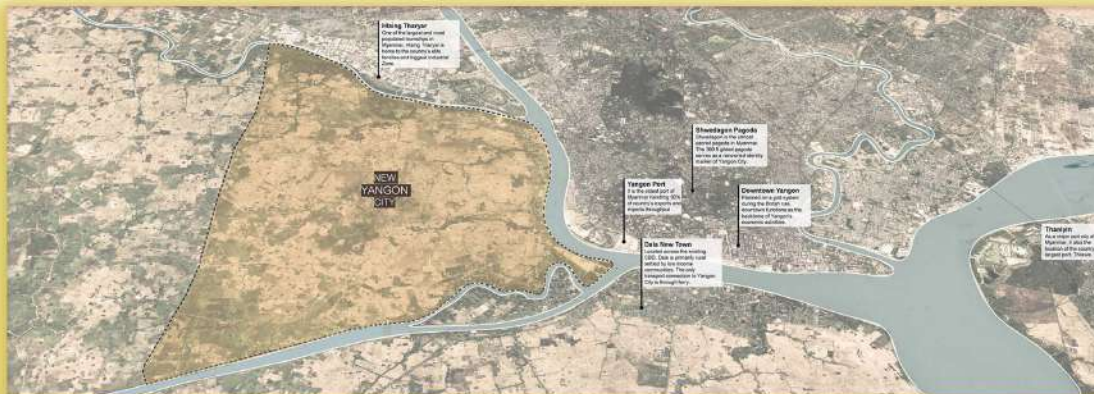
Employment

NYC will accommodate about **900,000 jobs** by **2050**, depending on the scenario

There will be a gap between the resident workforce and number of jobs, reaching a peak of more than **400,000** around **2032**

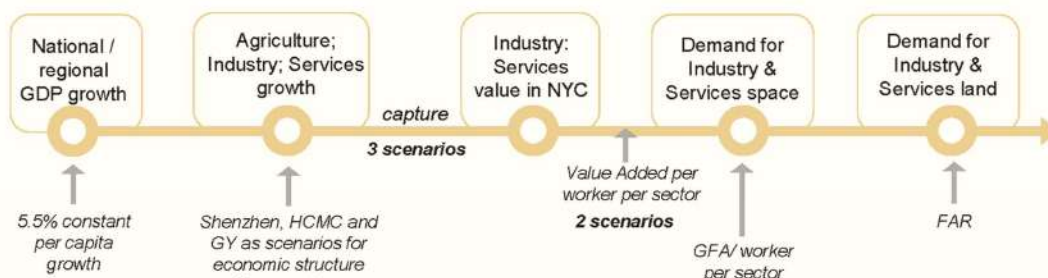
This will result in a large number of commuters, requiring significant investments in **transport infrastructure**

Site Context Surrounding Context



Employment GDP Growth & Structure

The general approach for projection of land use for industry and services is as follows:



Land Development

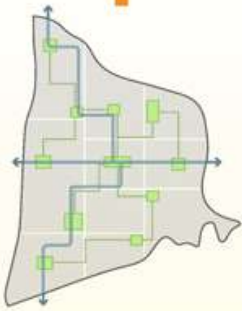
The economic model projects a gradual increase in land use from about **24 km²** in **2025** to **44 km²** in **2030** and **90 km²** in **2050**

In **2050** about **25%** of the area is for **industrial** land use, **9%** for **services**, **31%** for **housing** and the remainder for other uses

The Vision Big Moves

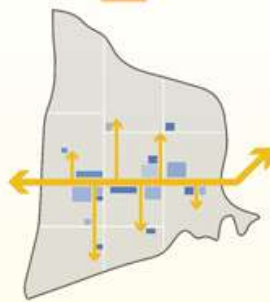
8
BIG
IDEAS

1



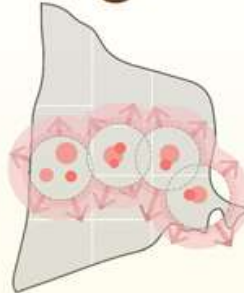
Leveraging existing green networks, enhance liveability and resilience by creating hierarchies and new connections

2



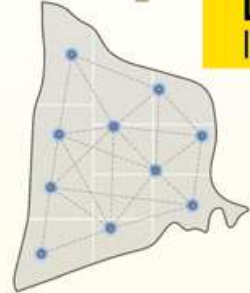
Create a cultural spine as a means of expression as well as a connection between various programs within the main public realm of the city

3



Create nodes and districts catering to different key activities of the city lending an identity to each

4



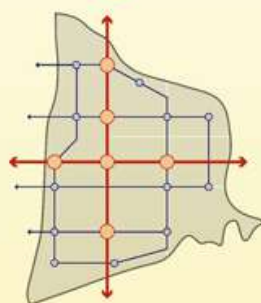
Enable integration of urban tech in the public realm, transportation, and infrastructure for maximum outreach and social benefit

5



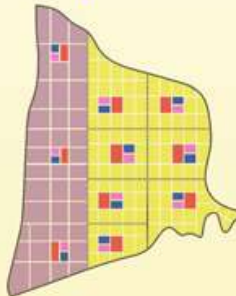
Identify an industrial zone leveraging on existing and future connectivity to create an ecosystem allowing clustering as well as incremental growth

6



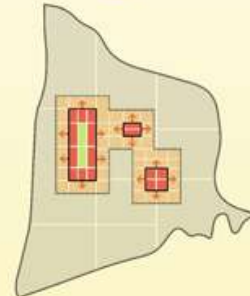
Create a multi-layered public transit system with Transit Oriented Development that connects internally, as well as with the region's network

7



Allow for 'estate' based planned development with norms and standards for a sustainable and cohesive city complete with required facilities and amenities

8



Identify initial catalysts that lend an identity while creating phases of development and land banking to absorb changes and capture future value

The Vision The Four Pillars

4
PILLARS

1. RESILIENT CITY



"A city of robust eco-system that creates a vibrant and sustainable development."

2. INTELLIGENT CITY



"To ensure the future growth and sustainability of population by introducing smart elements"

3. GREEN CITY



"To create lifestyle, business, community and industry nested in Nature"

4. PEOPLE'S CITY



"An inviting city that celebrates its rich contents and depth that bring citizen pride."

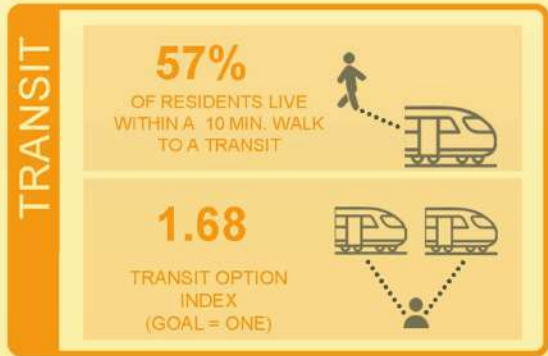
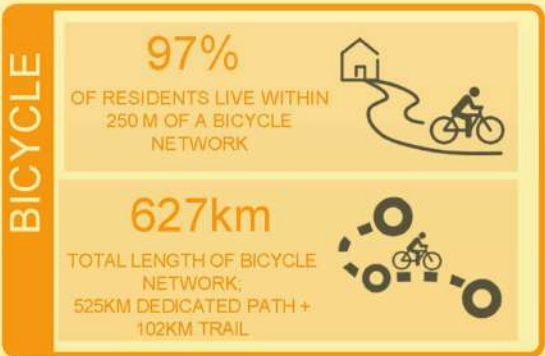
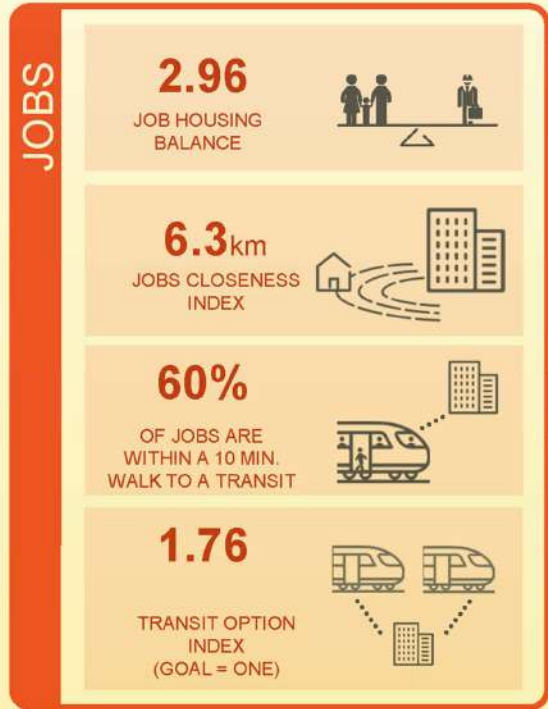
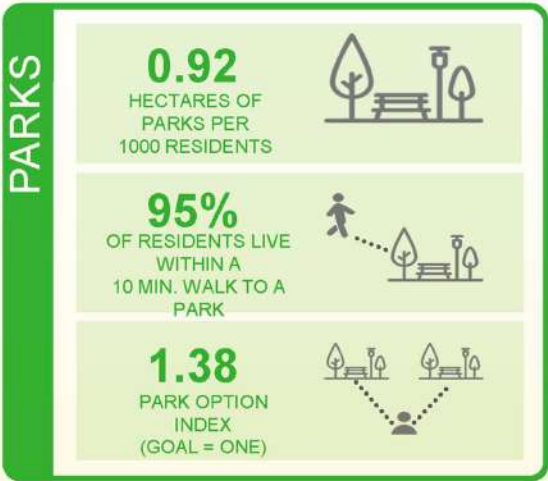
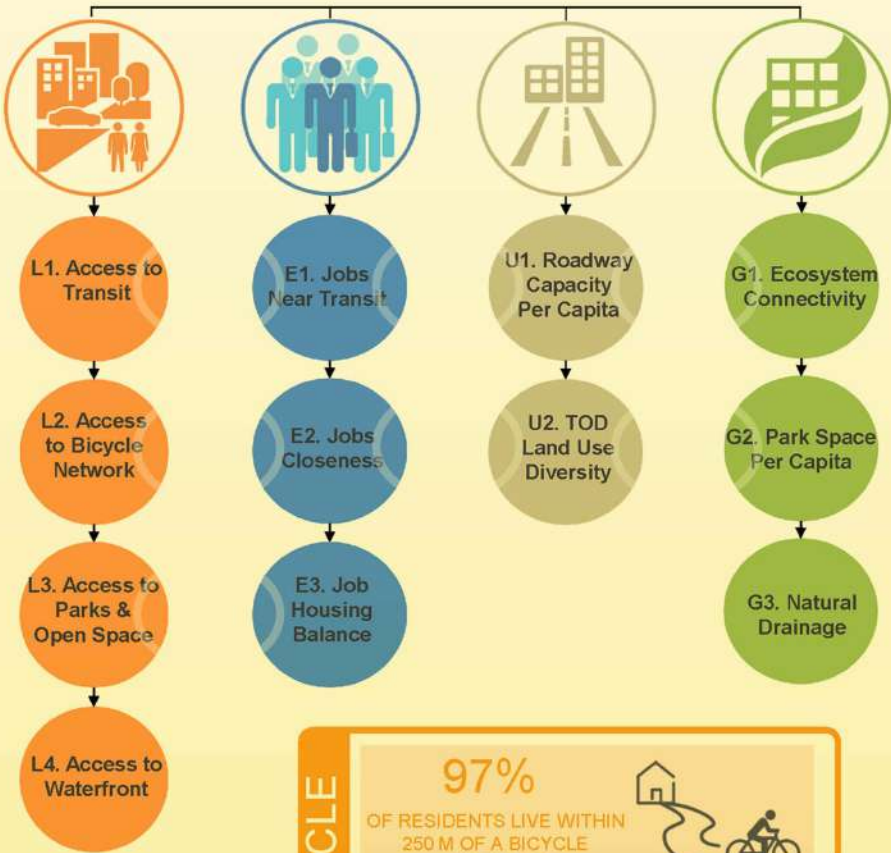
Master Plan

Key Performance Indicators (KPIs)



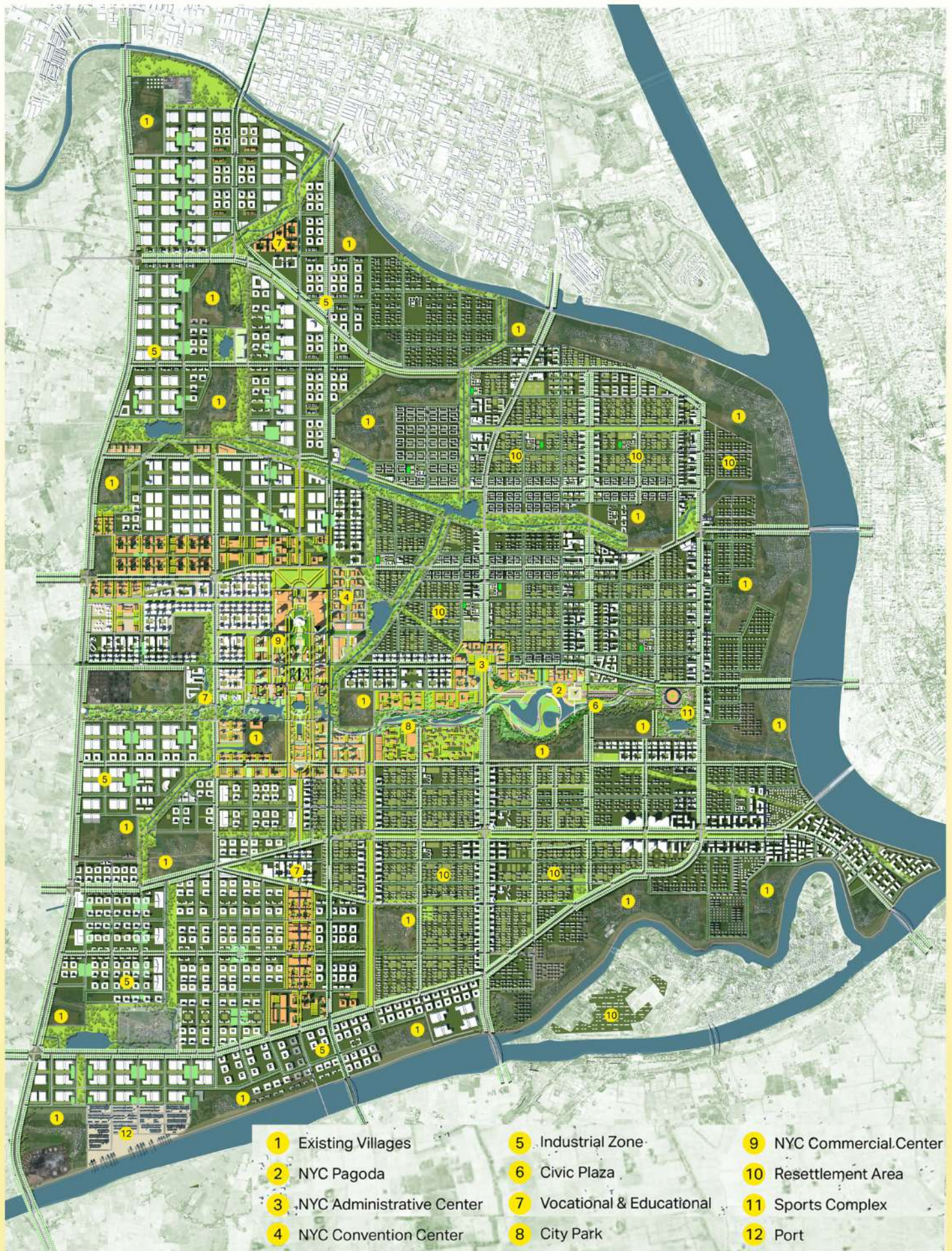
Key Performance Indicator Wheel

Key Performance Indicators (KPIs)



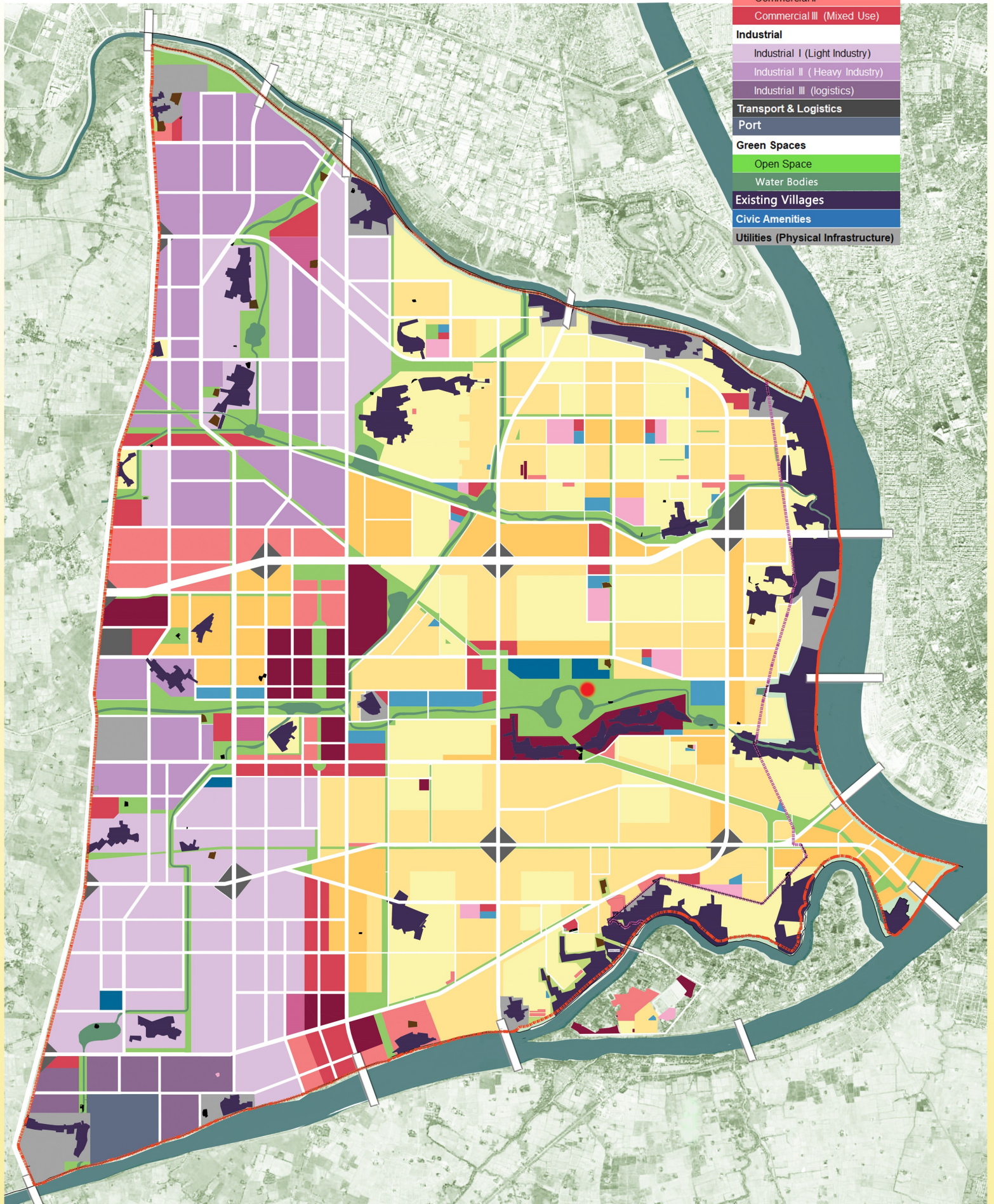
CITY OF THE FUTURE

Illustrative Masterplan

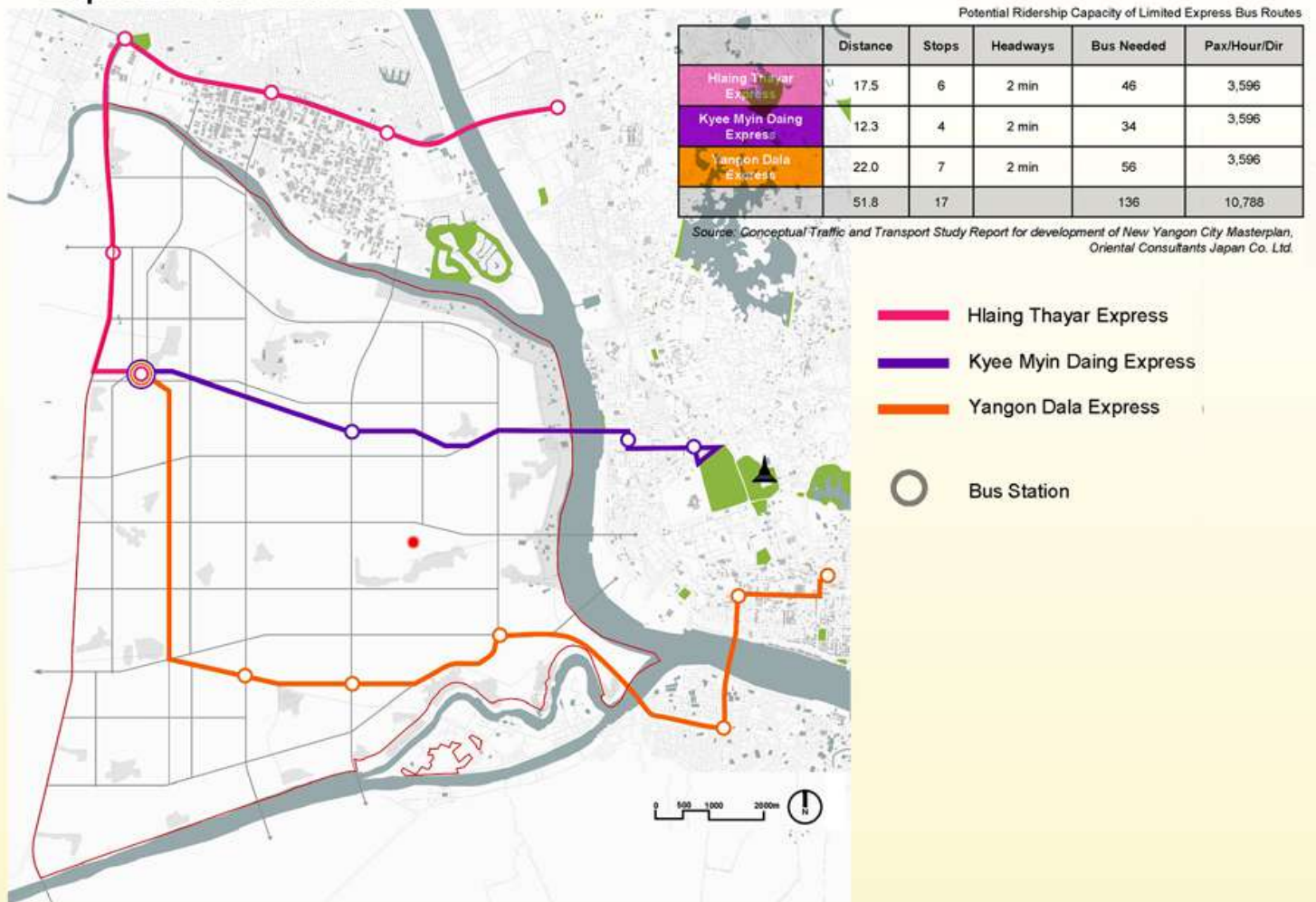


CITY OF THE FUTURE

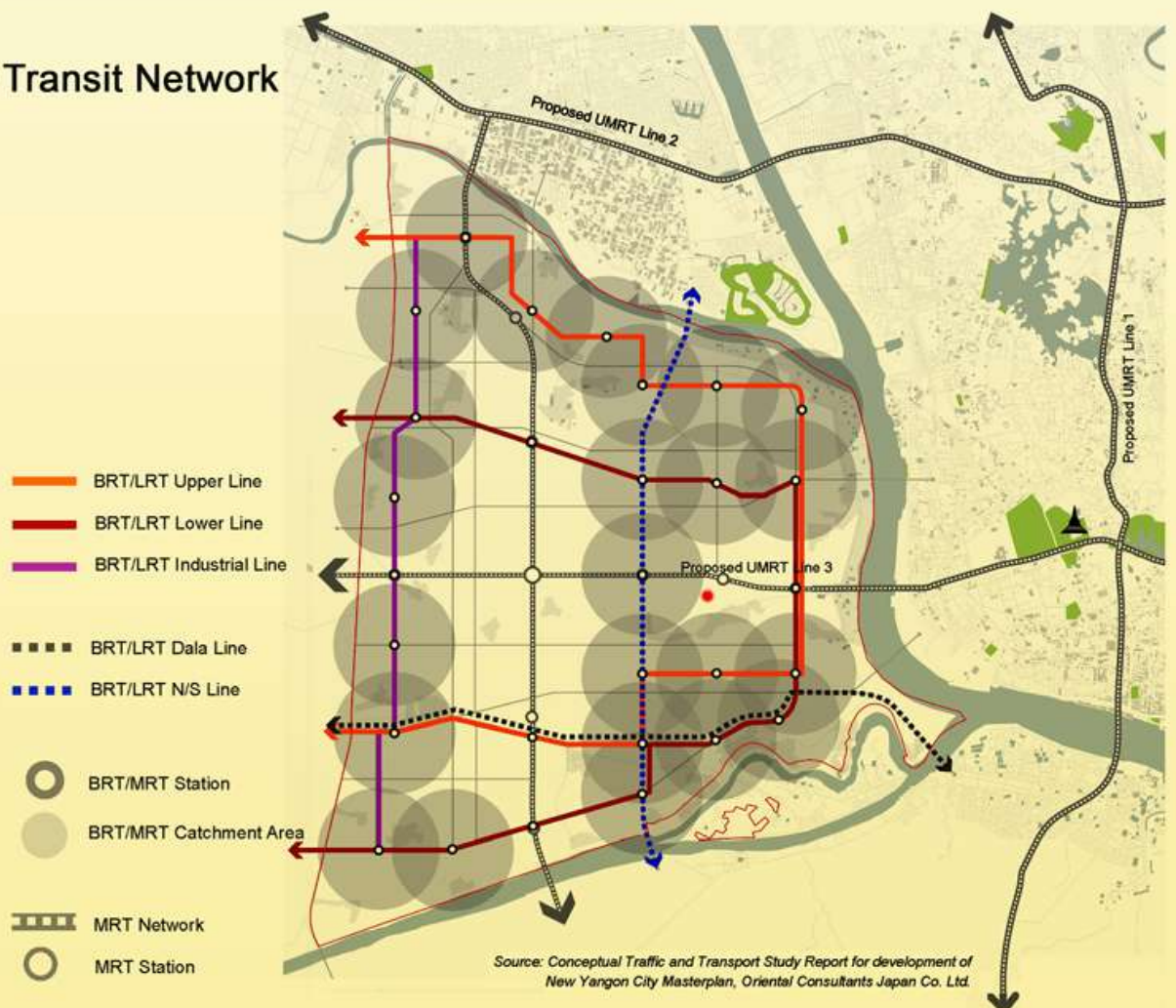
Landuse Plan

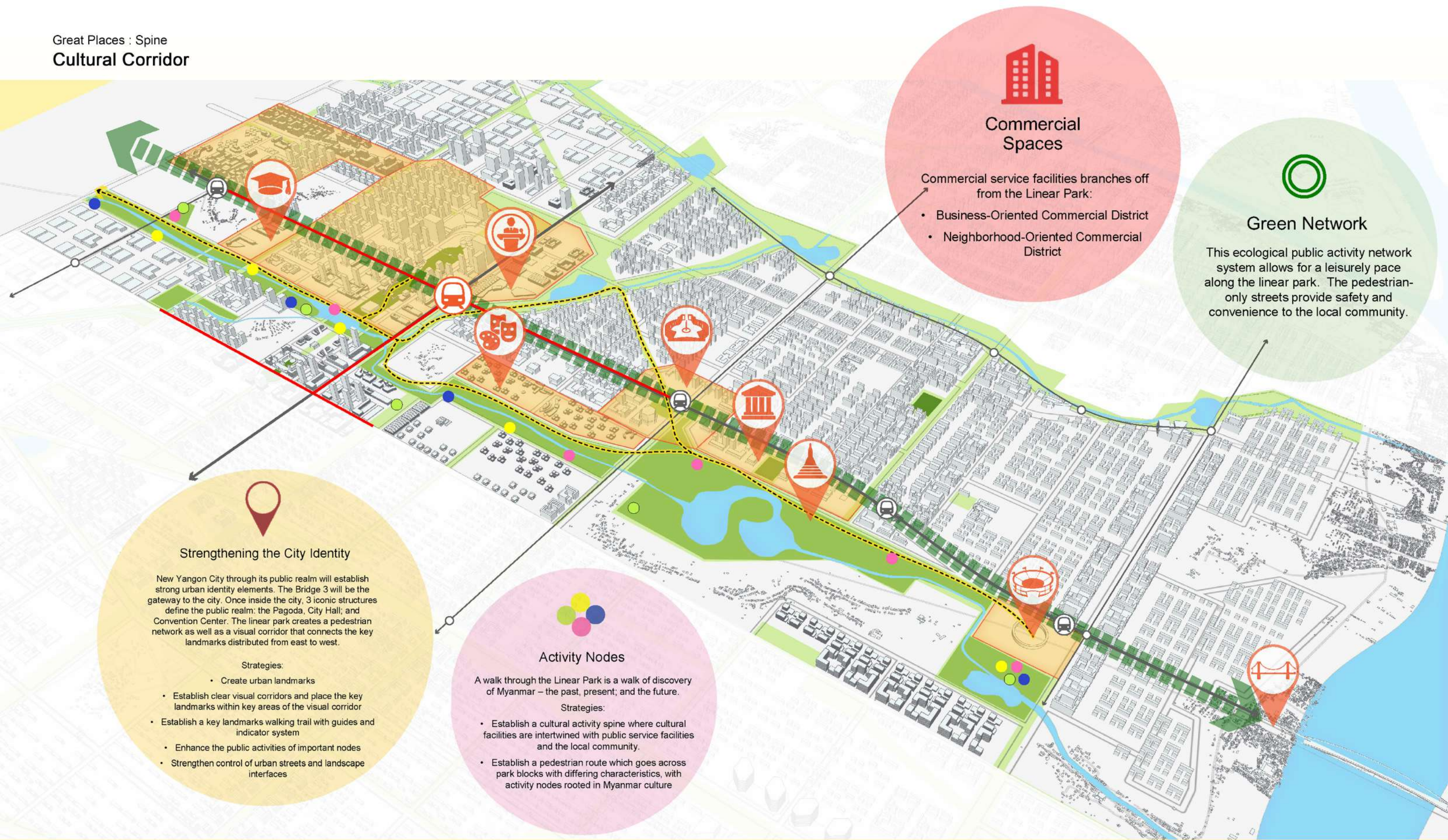


Express Bus Network



Secondary Transit Network





City Landmarks

- Central Green Spine
- Green Buffer
- Water Bodies

- Public Art Installations
- Learning Node
- Outdoor Activity Nodes
- Police Outpost



Main & Transport Hub



MRT Network



MRT Station



Secondary Transit Network



Secondary Transit Station

Green Boulevard



Landmark Walking Trail



City Landmark Boulevard

KEYPLAN





Tabaung (Feb/March)

Union Day, 12 February

This day is celebrated to honour Panglong Agreement, that pronounce full independence in internal governance. The remembrance includes yearly participation in actions and movements of more than 7000 people representing different tribes in the country.

Tabaung Festival

This festival falls on the Full Moon Day of the month and marks the completion of Shwedagon Pagoda. This festival is celebrated with lanterns, veneration of Buddha, donations for monks and other cultural performances



Thadingyut (Sept/ Oct)

Thadingyut Festival

Also known as the Festival of Lights, Thadingyut festival is celebrated on the last day of Buddhist Lent, marking the return of Buddha from heaven. Being the most liveliest and popular festival in Myanmar, people light candles and lanterns in the evening. Traditional performances, market fairs and other interesting activities take place in this 3 day festival.



Tazaungmon (Oct/ Nov)

Tazaungdaing Festival

This festival is celebrated to mark the end of rainy season, during which monks are offered new robes and alms. The main feature of this festival is the robe-weaving competitions held for 2 consecutive nights.



Kason (April/May)

Buddha Day Festival

Buddha Day festival, also called Kason Festival, is one of the most important festivals in Burmese Buddhism. On this day, Buddha attained enlightenment under a Bodhi tree. This festival involves religious rituals, processions and water pouring on Bodhi trees and statues.

CULTURAL FESTIVALS & URBAN ACTIVITIES LOCATION



YEAR-ROUND CULTURAL FESTIVALS & URBAN ACTIVITIES

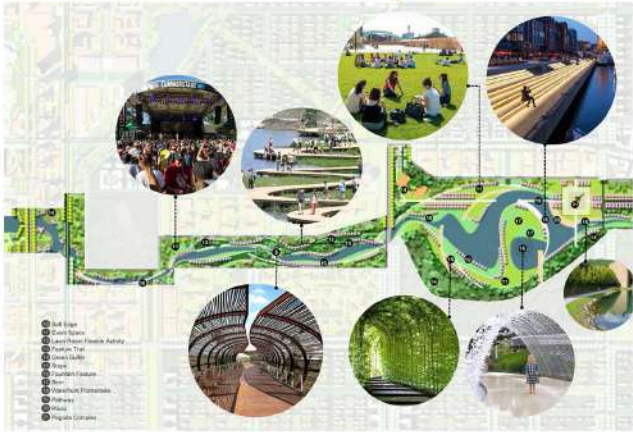
	Tagu (March/April)	Kason (April/May)	Waso (June/July)	Thadingyut (September/October)	Tazaungmon (October/November)	Tabaung (February/March)
Major Festivals	 Thingyan Festival - Myanmar New Year	 Buddha Day - Full Moon Day of Kason	 Beginning of Buddhist Lent - Full Moon Day of Waso	 End of Buddhist Lent - Full Moon Day of Thadingyut	 Saradaw/Literati Day - Full Moon Day of Tazaungmon	 Paya-pwe/Pagoda Festivals - Full Moon Day of Tabaung
	 Fireworks/Light & Sound Show	 No Tree Cleansing Ceremony	 Flower Festival	 Light & Sound Show	 National Awards Ceremony	 Outdoor Concert
	 Water Festival	 Group Meditation	 Flower Market	 Tawatha Festival	 Cultural Show	 Street Bazaar
	 Burmese Regatta	 Street Razor	 Flower Sculptures	 Running Marathon	 Art Fair	 Outdoor Recreation Festival
National Holidays	 Peasants' Day - March 2	 May Day - May 1	 Martyrs' Day - July 19	 National Day - December 2	 Independence Day - January 4	 Union Day - February 12
	 Farmer's Market	 Labor Day Walk	 Exhibition	 Light & Sound Show	 Fireworks/Light & Sound Show	 Fireworks/Light & Sound Show
	 Outdoor Concert	 Film Showing	 Walk of Remembrance	 Outdoor Concert	 Independence Day Parade	 Union Day Bazaar
				Nadaw (November/December)	Pytho (December/January)	

Catalyst Projects

Critical Catalyst Project

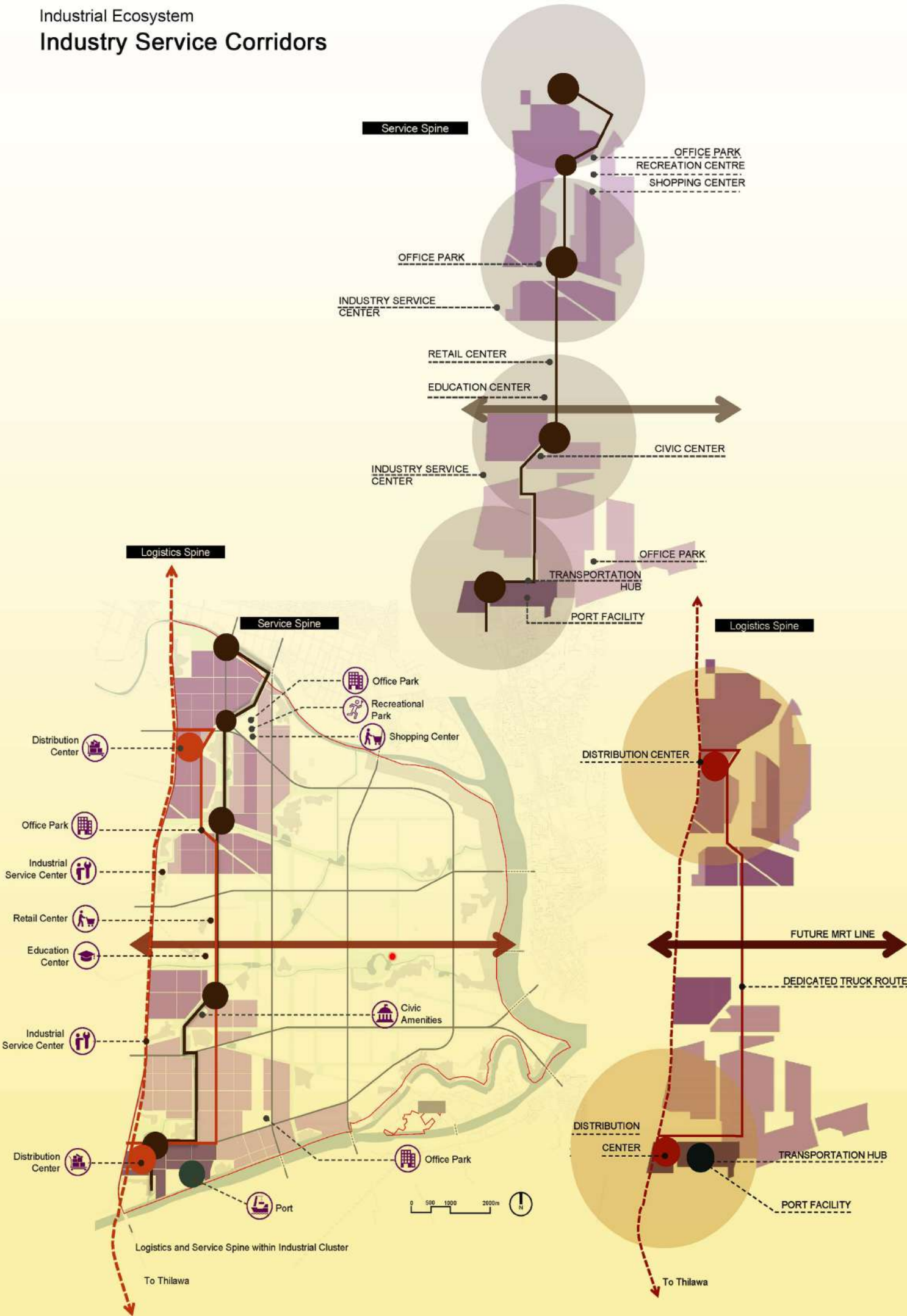


The City Hall is initially envisaged as a multi-purpose building that provides space for city functions and it's builders. It can also provide space for business centers for the early industrial establishments. Small exhibition and convention spaces can also be created at the ground levels, to be later refurbished for administrative functions.



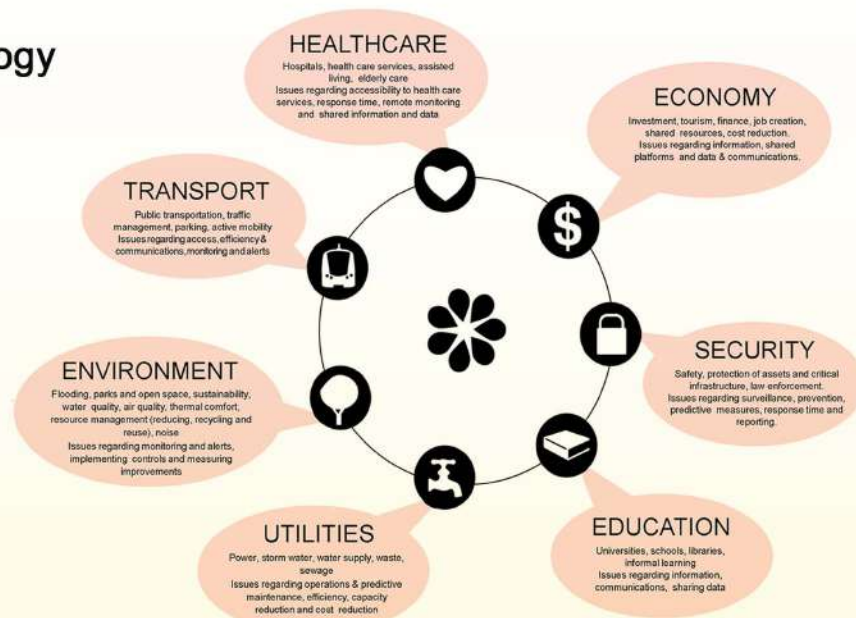
The City Pagoda is expected to give a unique yet Burmese identity to the city. With views towards the Shwedagon Pagoda, it will help link the new with the old. It is envisaged to become a preferred space for inhabitants for religious as well as quiet leisure. The Pagoda is expected to be developed along with the city park in its surroundings. The park is envisaged to create a signature landscape for New Yangon that is recognizable in pictures. This public realm is expected to establish New Yangon as a preferred destination providing confidence to people and investors alike about the future of the city.

Industrial Ecosystem
Industry Service Corridors



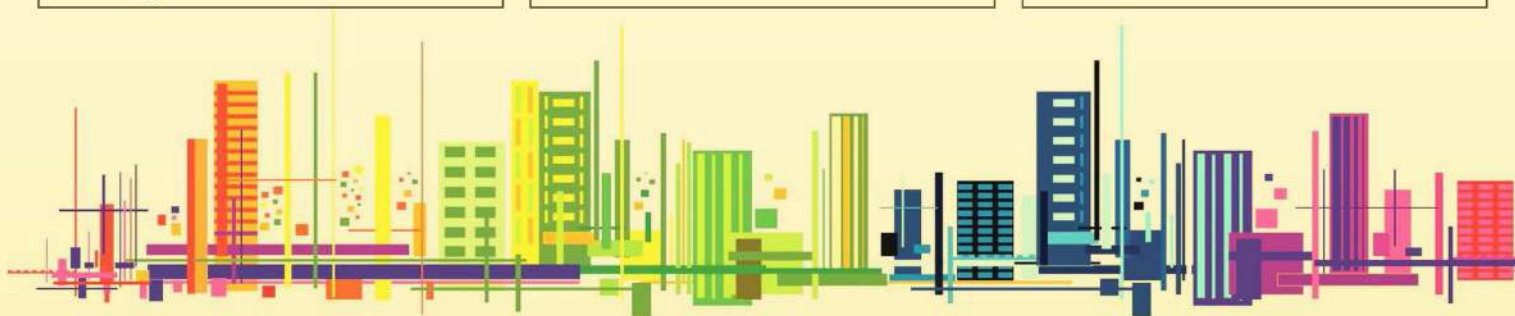
Integration of Urban Technology to Benefit Society

“Smartness is not a measure of how advanced or complex the technology being adopted is, but how well a society uses technology to solve its problems”



Smart City Planning

Resource Management & Infrastructure	Government Operations & Planning	People & Communities
<ul style="list-style-type: none"> Public transportation outdoor location analytics Traffic tracking, enforcement, and incident management Adaptive traffic light and pedestrian safety Smart parking Smart street light management Smart irrigation Smart water management and tracking Smart waste management Park facility monitoring Road condition management Power grid monitoring Atmosphere and weather monitoring/ warning Building environmental management Bike sharing 	<ul style="list-style-type: none"> Smart initiative tracking and reporting Court information management system Tax enforcement and information reporting analytics Land use and environmental management Smart crime incident data collection and prediction analytics Smart permits, licenses, and zoning enforcement systems Urban planning 	<ul style="list-style-type: none"> Remote health-check Blind and elderly navigation assistance Community membership identification and access systems Smart tourism and culture guidance services Education content portal and hosting services Business community CCTV community monitoring Start-up ecosystem Social services Connected libraries Cultural and community attractions, events, and tourism



Initial Steps

Creation of a Framework



Fibre Backbone



City-wide Wifi Network



Governance Framework



Command & Control Center



Parking Monitors



Smart Travel Card



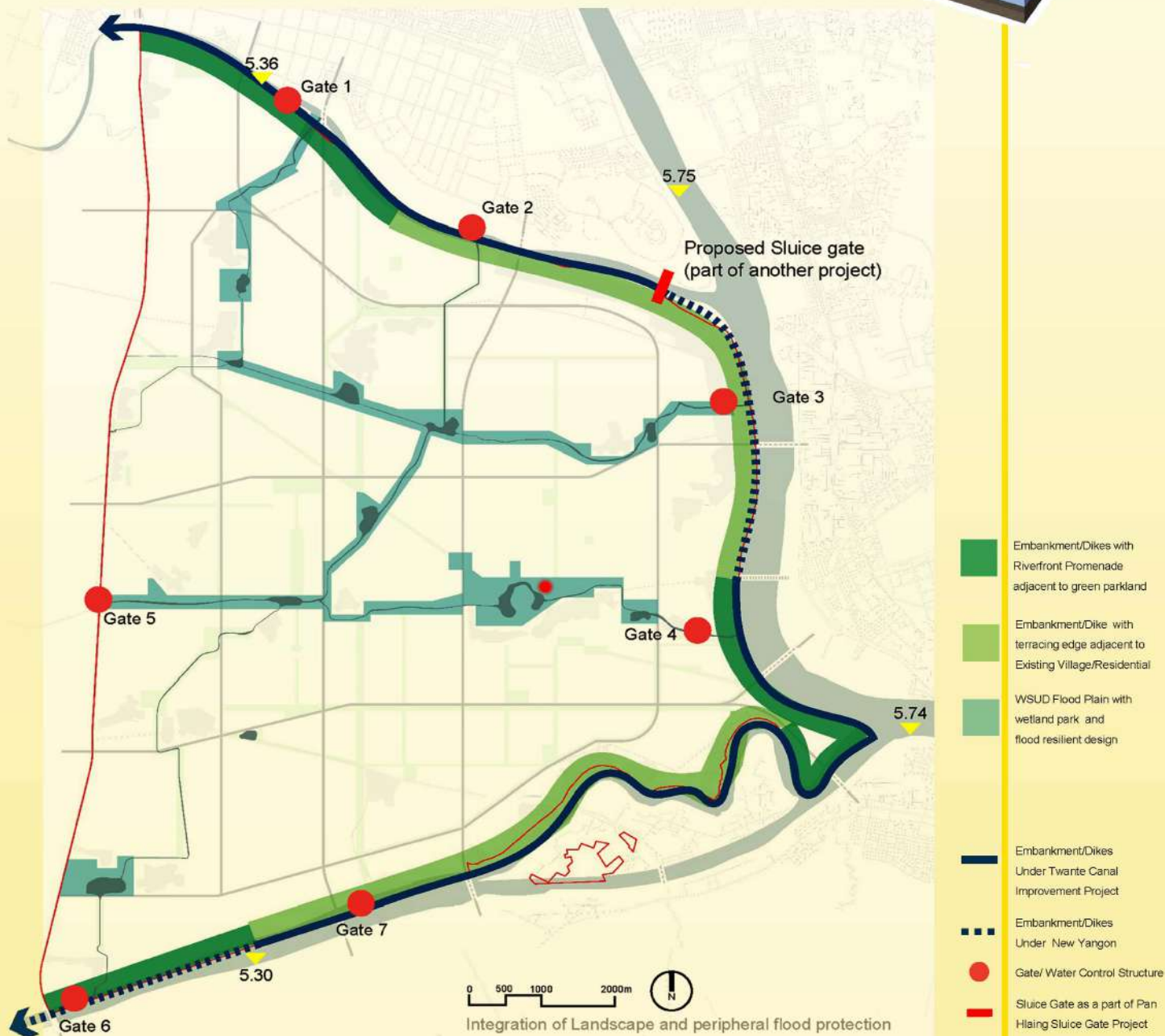
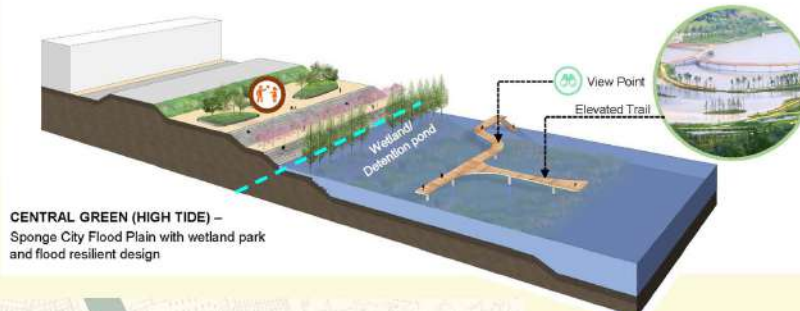
e-Governance



Security Cameras

Flood Management Strategies

Flood Resilient Design



CONTACT US

NEW YANGON DEVELOPMENT COMPANY LIMITED

56, Chindwin Road, Kamayut Township, Yangon, Myanmar

+95 1 2306377, 2306378

ir@nydc.com.mm, contact@nydc.com.mm

